

BUILDKRAFT
CONSULTANTS
CONSULTING ENGINEERS
& DEVELOPERS

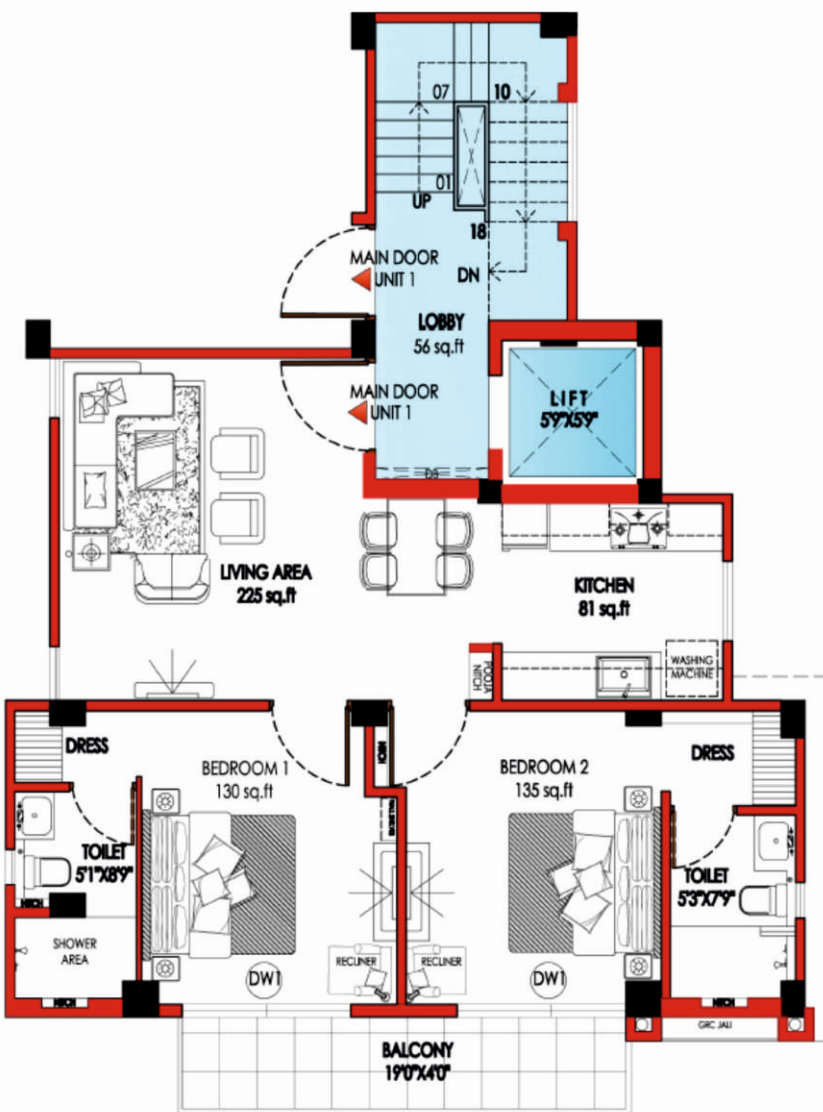
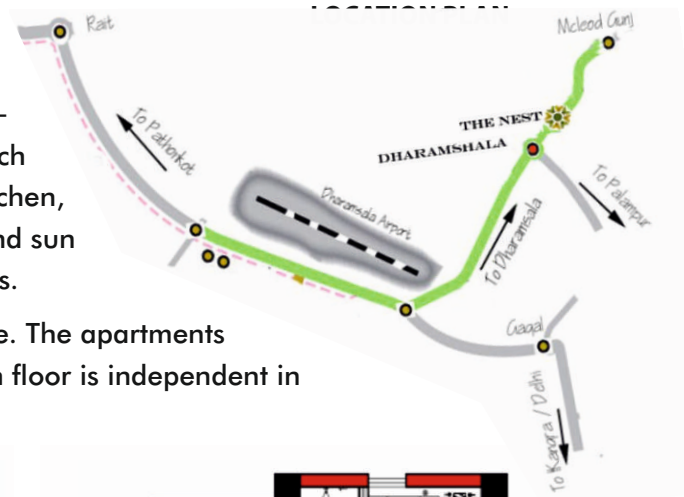


INTRODUCTION:

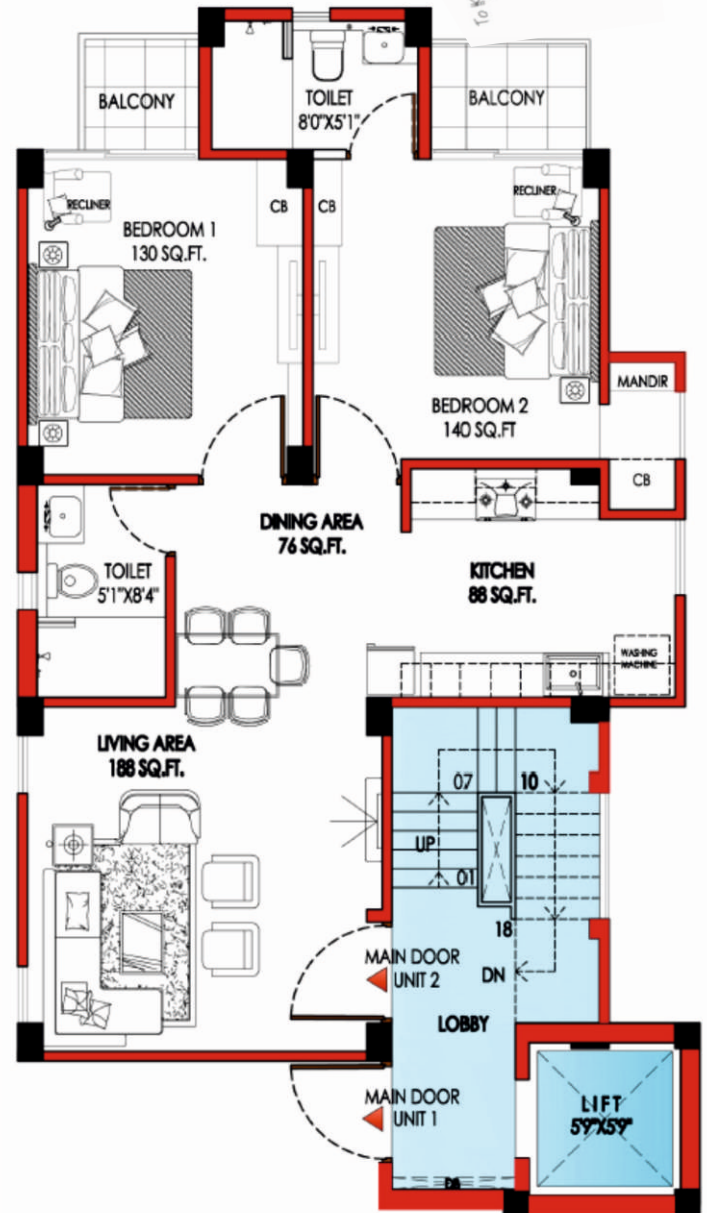
Builder Floor at Ram Nagar Dharamshala.

Plot size measuring 340 Sq.y. The Building includes one Stilt + Four Levels. Each Level has two units. Super built-up area. Each unit have two bedrooms with attached toilets, living room, kitchen, utility & leisure balcony. The house is designed keeping in mind sun & wind directions, green building parameters and local bylaws.

The planning is for a minimum maintenance, maximum usage. The apartments are made to be healthier for the residents by enveloping each floor is independent in terms of services.



UNIT 1 "THE NEST" CONFIGURATION: 2BHK
BUILTUP AREA **855 SQ.FT.**
SUPER BUILTUP **1235 SQ.FT.**



UNIT 2 "THE NEST" CONFIGURATION: 2BHK
BUILTUP AREA **845 SQ.FT.**
SUPER BUILTUP AREA **1225 SQ.FT.**





BEDROOM WITH WARDROBE



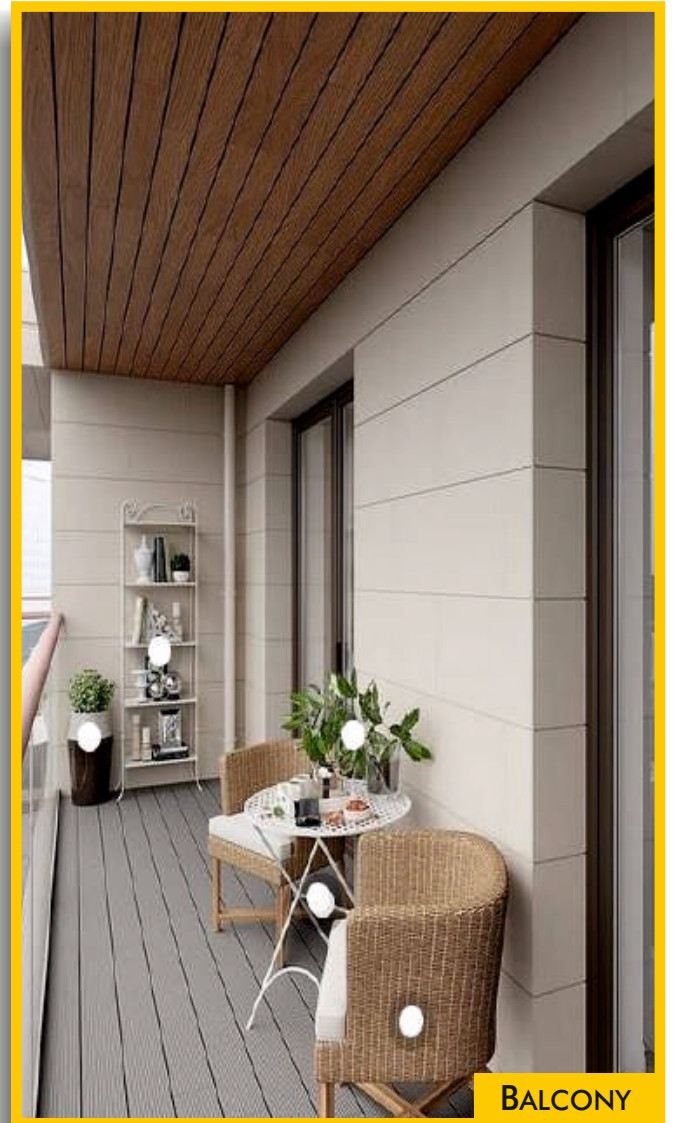
WARDROBE



LIFT LOBBY



LIVING ROOM



BALCONY



KITCHEN

PRICE STARTS FROM 55 LAKHS

Option 1 (5% Discount)

BOOKING AMOUNT:	10%
Within 30 days of booking:	85%
Registration & Possession:	5%

Option 2

BOOKING AMOUNT:	10%
Commencement of Construction:	30%
Completion of Structure:	30%
Finishing (Brickwork, Plaster & Paint):	20%
Registration & Possession:	10%

POSSESSION DATE : OCTOBER 2023

FREE HOLD PROPERTY WITH BANK LOAN FROM ALL LEADING BANKS

SANCTIONED DRAWING

ANY CITIZEN OF INDIA IS ELIGIBLE TO BUY

OUR BUILDING MATERIAL MAKES

SANITARY WARE	 	WOOD WORK	  
PLUMBING /FITTINGS	  	LIFT	  
WINDOW SYSTEMS	 	SECURITY	 
FLOORING	     	PAINTING	
WOODEN FLOORING	 BY SWISS KRONO GROUP	ELECTRICAL	  
KITCHEN	 the modern home maker	STEEL	  
		CEMENT	 



BUILDKRAFT CONSULTANTS

153 Shyamnagar, Dharamshala

www.buildkraft.co.in • Mob: 9810450714 • E-mail: info@buildkraft.co.in